

Tools for the Next Way of Life

Evolution



C O N T E N T S

Evolve by design

- 4. Defy... ISHIYAMA MOKKOUSHO, INC.
- 5. Homage Niigata Japanese ware Co., Ltd.
- 6. Knife Urushi Lacquer NIIGATA INVESTMENT CASTING CO., LTD.
- 7. Ply Cloud NOMURA MOKKOU CO., LTD.

Evolve by material

- 8. "Moku me gane" Accessories GYOKUSENDO

Evolve by technique

- 9. Relaxing WASHI gauze ao, inc.
- 10. "UTAGE" PRINCE KOGYO CO., LTD.
- 11. Ebony attired MARUNAO CO., LTD.

Evolve by function

- 12. Table tools MARUTO HASEGAWA KOSAKUJO INC.
- 13. Dried bonito shaver, "Akakou" Yamatani Works. Ltd

Evolve by meaning (narrative, culture, conduct)

- 14. Encapsulated silicone IC Tag SUNARROW KASEI CO., LTD.
- 15. Accessories from waste SUWADA Blacksmith Works, Inc.



Tools for the next 100 years, inspired by those from the last 100 years.

A collection of tools that draw on a century of heritage, the "Centennial Collection" presents lifestyle tools for the next generation. The collection is based on the theme of creating "heirlooms that enable the enjoyment, sustenance and continuation of a cultured lifestyle". Unlike tools that are mass-produced for mass-consumption, the tools in this collection are all limited editions designed for longevity and to suit the needs of the individual. As such they have been designed as tools that mirror the characteristics of the individual and appeal to his sense of value. They are tools that will be treasured, and can be given as gifts that will be admired for their craftsmanship, tools that express the charm and vibrant culture of Niigata and help create a support system for an enhanced lifestyle.

The Centennial Seal of Quality

The Centennial Value Collection, a range of products representing new values and showcasing the way a new generation of products can be, is the fruit of the collaboration between the industries and artisans of Niigata, Japan. Such a collaboration was made possible by NICO (Niigata Industrial Creation Organization), a foundation set up by Niigata Prefecture to assist networking for businesses and creators, in addition to supporting the development of new products. Items created with the assistance of NICO carry a seal of quality certifying their excellence.

This seal of quality is constructed from the following three components



CENTENNIAL VALUE COLLECTION

A certification marking indicating that the item is of a quality and based on a vision befitting its place in Tales of a Century : The Centennial Value Collection.



FROM NIIGATA JAPAN

A second marking bearing the motif of a Japanese crested ibis - a beautiful bird that symbolizes Niigata Prefecture, indicating that the item is produced by the excellent skills of the local artisans in Niigata Prefecture. Incidentally, the Japanese crested ibis, with the scientific name of *Nipponia nippon*, is also a bird that represents Japan.



THE YEAR OF THE MONKEY 2016

A third marking indicating the year in which the item was developed. In addition to the Christian era, the Japanese also use the twelve signs of the Japanese zodiac to designate a calendar year. For instance, the year 2016 is also the year of the Monkey, and the Japanese character for Monkey is displayed on the marking to indicate the developing year.

Tools
for the Next Way
of Life

Evolution

百年物語

Hyakunen-Monogatari



Centennial Value Collection
from Niigata JAPAN

Evolve by design

The discovery of something entirely new, something of beauty, something that makes you smile.
The discovery of a new sensibility.

Evolve by material

Materials that are selected not only for their functionality but for their inherent worth,
for the feelings they evoke. The discovery of a new value in materials.

Evolve by technique

Techniques that create products with individual appeal, bespoke products with their own distinct
character. Techniques that impart a new sense of value.

Evolve by function

Products that offer ease of use, convenience, safety and peace of mind.
Products that provide the things we cannot do without in our every day lives.

Evolve by meaning (narrative, culture, conduct)

A fresh look at products that possess their own inherent worth, in and of themselves,
as well as possessing worth through their use and function.



New interior products that change the way you live your daily life.

A woodworks that combines the skills of our artisans with NC technology to create constantly evolving solutions for the home, retail outlets and institutions designed for children. Our collection of products is the result of taking on board the latest technologies and market developments and using woodwork finishing techniques by combining 3D CAD/CAM software and NC routers with the delicate refined skills of our master artisans.



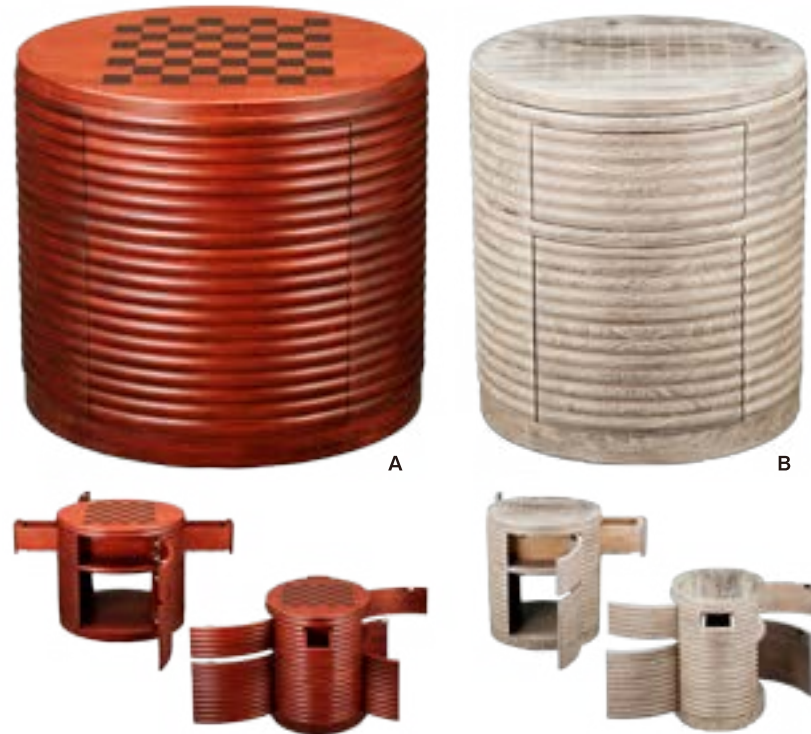
ISHIYAMA MOKKOUSHO, INC.

Address: 5-26 Shineicho, Kamo-city, Niigata 959-1381 JAPAN Phone: +81 (0) 256-52-0300 Fax: +81 (0) 256-53-2379
E-mail: info@ishiyama-mokkousho.co.jp URL: <http://ishiyama-mokkousho.co.jp>

Pieces that refuse to be categorized as just furniture

Defy...

Oblong shaped sculptures that give the impression of being interior objet. However, these are objet that double up as bar and card tables. The sense of the owner's heart and sensibilities are woven into every part of each piece. Unlike any furniture that has gone before they combine exquisite quality with freedom of expression and design.



(A)

Item no: TNL2-02-01

Product name: PN-02

General category: Storage as objet (L)

Variations: Colour - Hazel

Size: W750×H680×D600mm

Materials: Laminated paulownia

Finish: Urethane paint

Weight: 24kg

Usage precautions:

Please do not place item on its side. If water is spilt on the product please wipe dry with a clean cloth immediately. Please store in an upright position.

(B)

Item no: TNL2-02-02

Product name: PN-03

General category: Storage as objet (M)

Variations: Colour - Grey

Size: W600×H680×D480mm

Materials: Laminated paulownia

Finish: Burned and polished

Weight: 20kg

Usage precautions:

Take care to avoid getting the piece wet as this could lead to smears or blotching. Please store in an upright position.

Designer: Masaharu Ishiyama

People engaged in production:

Masaharu Ishiyama, Yuka Tanaka,
Kazuo Sudo etc



Reproduction painting techniques for traditional craft products
(Niigata Japanese ware) “Oboro-gin painting”

Homage

A reproduction of a painting technique favoured by renowned lacquer artist from the Edo and Meiji eras, Zeshin Shibata. Painting wood objects as metal looking, using a “Oboro-gin painting” lacquering technique creates a new world of tableware. Using a design by Niigata-based designer Ryuta Ishikawa we have breathed new and magnificent life into the ancient art of lacquer ware.

Item no: TNL2-06-01

Product name: NSO-01

General category: Dining goods

Variations: Colour - “Oboro-gin”

Size: W310×H122×D310mm

Materials: MDF

Finish: Lacquered

Weight: 3kg

Designer: Ryuta Ishikawa (Frame inc.)

People engaged in production:

Niigata Japanese ware Co., Ltd.

Keita Sato, Momoko Sanada,

Frame inc. Ryuta Ishikawa,

Japan University of Economics

Akie Kawagoe,

Oominato Bunkichi Shouten Co.,Ltd.

Yosuke Ominato



Usage precautions:

Not suitable for use with direct heat source or dishwasher. Please do not place near naked flame. Please avoid exposing to direct sunlight or UV rays for long periods and avoid storing product in a place where it is liable to dry out. Please wash with a soft cloth or sponge and do not leave to soak in water for long periods.



Design to enhance the enjoyment of dining. Changing a table as a stage of assorted dishes.

As Japan's most important port in the Edo era Niigata has always been a hotspot for lacquer ware and local manufacturers have accumulated many different techniques and ideas exclusive to the region. Niigata Japanese ware works tirelessly to bring these traditions and techniques into the modern age and are constantly setting themselves new challenges.



Niigata Japanese ware Co., Ltd.

Address: 1-329 Eishodori, Chuo-ku, Niigata-city, Niigata 951-8114 JAPAN

Phone: +81 (0)25-265-2968 Fax: +81 (0)25-265-3144 E-mail: nuridon311@ma.tlp.ne.jp URL: <http://www.nuridon.com>



Design a form that cuts

Knife Urushi Lacquer

When we think of the development of knives, until now the main part of focus has been the blade itself. However, we wanted to broaden the thinking behind this and create an instrument that comprises both handle and blade in one form. Using our expertise in the lost wax casting process we have succeeded in creating a cutting instrument that excels in both free design and functionality.

Item no: TNL2-07-01

Product name: Knife Urushi Lacquer
General category: All-purpose kitchen knife
Variations: Black urushi lacquer finish, red urushi lacquer finish
Size: W300×H20×D50mm
Materials: Blade – 15Cr stainless,
Materials: Handle – Stainless cast metal
Finish: Polished
Weight: 210g

Designer: Tsuyoshi Sato
Companies engaged in production:
NIIGATA INVESTMENT CASTING CO.,LTD,
Kiryu Kogyo CO.,LTD,
Sanki Bussan CO.,LTD



Usage precautions:
Please do not wash in a dishwasher. Regular sharpening of blade is essential.



NIIGATA INVESTMENT CASTING CO.,LTD.

Address: 726-3 Sunakotsuka, Tsubame-city, Niigata 959-0103 JAPAN

Phone: +81 (0)256-98-5121 Fax: +81 (0)256-98-5648 E-mail: info@niigata-cast.co.jp URL: <http://niigata-cast.co.jp>

Casting metal into soft forms, moving towards newness in design.

Taking conclusions drawn from our original in-house research we use the lost wax casting processes whereby wax is press moulded to form the desired shape, then transfer cast in metal. From vital safety instruments used in power plants to defense equipment and elements required for artificial bones, NIC Co.,Ltd manufacture a huge range of different products. Using the knowledge and expertise cultivated through experience we have created our dining tools.





Adults and children alike can enjoy this assembly furniture as a they would a toy

Ply Cloud

Using plywood with little or no waste, Ply Cloud is born of ecological design. Possessing the dual functions of a very easy-to-use display shelf and an interior element designed to add to the ambience of the room, the Ply Cloud is the result of great innovation and creativity and is designed to be used with imagination and freedom.

Item no: TNL2-08-01

Product name: Ply Cloud

General category:

Multi-function display shelf

Variations: Woodgrain stain finish,

clear paint finish, natural finish

Size: W1,160×H850×D720mm (set)

Materials: Tilia plywood

Finish: Woodgrain stain finish,

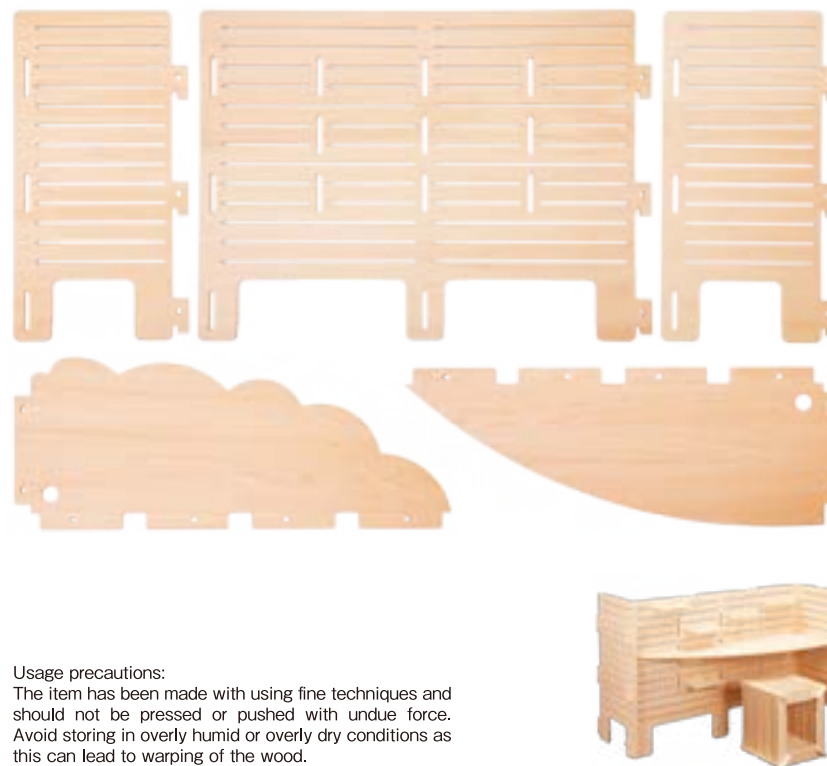
clear paint finish, natural finish

Weight: 18kg (set)

Designer: Taiji Nomura, Yoriko Ito

People engaged in production:

Taiji Nomura, Yoriko Ito, Takashi Yamazaki



Usage precautions:

The item has been made with using fine techniques and should not be pressed or pushed with undue force. Avoid storing in overly humid or overly dry conditions as this can lead to warping of the wood.



Units cut out from a single sheet transform freely into pieces of furniture.

Architectural fittings such as sliding doors (shoji, fusuma etc) are quintessentially Japanese ways to partition space. They have not only function as dividing up the room but also allowing for the control of air-flow, light and shade and function as objects of beauty in themselves, enhancing the ambience of the interior. Nomura Mokkou has long worked in architectural fittings and made the most of their clever and useful functions and now introduce products designed for future generations.





Using metal laminating techniques passed down from the Edo era we have rethought the material and used it to create accessories.

Established 200 years ago Gyokusendo is a manufacturing works that draws on its long traditions but challenges itself to create tools to take us forward into the next generation. Combining 10s of layers of several different metals we are able to give the metal beautiful and highly characteristic colours. Known as "Moku me gane" it captures the spirit of the artisan and the Japanese sense of aesthetics.



The fruit of history and techniques honed over time.
Rising new challenges in our 200th year.

“Moku me gane” Accessories

Accessories created by combining “Moku me gane” through hammering techniques. The result of interlaying different metallic colours gives rise to unique variegated shades of astounding beauty. Harnessing the unique charms of “Moku me gane” each piece is distinctive in character. Enjoy your very own accessory, one of a kind.



※Each product is created individually so there can be design updates at any time.

Usage precautions:

Some people may experience itchiness or a rash as a result of direct skin contact with the metal. If you experience any discomfort please stop using the product immediately and consult a specialist. In the case of normal use, please wipe well with a soft cloth to dry the piece and remove any dirt after use. Contact with air and moisture can result in oxidation, vulcanization or blackening of the silver parts. The materials will react strongly to being soaked in hot spring water so please avoid use when bathing.

(A)

Item no: TNL2-03-01

Product name: Pendant top ①

General category: Pendant

Size: W70×H3×D70mm

Materials: Silver, red copper, copper

Finish: Oxidised colour

Weight: 25g

(B)

Item no: TNL2-03-02

Product name: Pendant top ②

General category: Pendant

Size: W74×H3×D74mm

Materials: Silver, red copper, copper

Finish: Oxidised colour

Weight: 30g

(C)

Item no: TNL2-03-03

Product name: Bangle ①

General category: Bangle

Size: W60×H50×D35mm

Materials: Silver, red copper, copper

Finish: Oxidised colour

Weight: 35g

(D)

Item no: TNL2-03-04

Product name: Brooch ①

General category: Brooch

Size: W25×H3×D90mm

Materials: Silver, red copper, copper

Finish: Oxidised colour

Weight: 25g

Designer: Miho Kawashima

People engaged in production:

Miho Kawashima, Mitsunori Watanabe



Creating, utilizing and preserving the softness of cotton fibres.

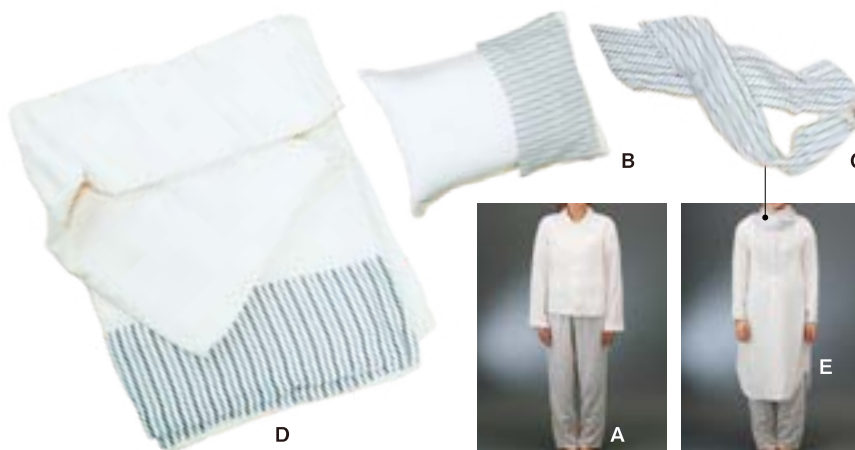
Ao manages the softening of organic cotton using natural enzymes as well as its production, management and problem solving, specifically in using a system of digitalization to record degrees of softness, comfort and sensuality to the touch. Involved in the development of raw cotton cultivation and natural indigo Ao also aims to promote ethical design.



Japan's future material: "WASHI gauze"

Relaxing WASHI gauze

In order to produce organic cotton that combines seemingly contrasting qualities of drape and strength, we have focused on washi paper, a material embedded in Japan's traditional culture. Through the weaving process we have developed a natural organic cotton material that excels in both strength and breathability. The fabric is ideal for products and clothing used at times of relaxation and sleep.



Designer: Natsumi Nishikawa, Tomoki Kikuchi

People engaged in production: ao,inc.: Masaki Igarashi, Natsumi Nishikawa, Tomoki Kikuchi, Urutora Hamai Design Office: Koji Hamai, Biso Igarashi Co.,Ltd: Kazumi Fujioka, Naomi Watanabe, Eri Kawahara, Mayumi Gomikawa, Ayako Yuo, Mai Higuchi, Yumi Shimizu

Usage precautions: Due to the nature of the fabric and the weaving process it is liable to pulling and catching. When wearing please be careful of any accessories or small items on surrounding surfaces or walls that might cause friction or catch the fabric. Please also exercise caution when washing or dry cleaning as the fabric might catch on other objects. Be sure to dry clean according to care instructions. Store away from direct sunlight to avoid fading.

(A)

Item no: TNL2-01-01

Product name: Washi gauze pyjamas

General category: Pyjamas

Variations: Natural

Size: S, M, L

Materials: Cotton 65%,
unspecified fibre (washi) 35%

Weight: Top and bottoms set 360 - 383g

(B)

Item no: TNL2-01-02

Product name: Washi gauze pillow case

General category: Pillow case

Variations: Natural

Size: W500×H5×D950mm

Materials: Cotton 65%,
unspecified fibre (washi) 35%

Weight: 176g

(C)

Item no: TNL2-01-03

Product name: Washi gauze ascot tie

General category: Ascot tie

Variations: Natural

Size: W150×H5×D1,400mm

Materials: Cotton 65%,
unspecified fibre (washi) 35%

Weight: 62g

(D)

Item no: TNL2-01-04

Product name: Washi gauze sheets

General category: Sheets

Variations: Natural

Size: W1,640×H5×D2,640mm

Materials: Cotton 65%,
unspecified fibre (washi) 35%

Weight: 607g

(E)

Item no: TNL2-01-05

Product name: Washi gauze dress

General category: Dress

Variations: Natural

Size: S, M, L

Materials: Cotton 65%,
unspecified fibre (washi) 35%

Weight: 244 - 264g



Address: 942 Nakashuku, Itoigawa-city, Niigata 941-0003 JAPAN Phone: +81 (0) 25-555-2300 Fax: +81 (0) 25-555-4278
E-mail: bisou@po5.nsk.ne.jp URL: <http://www.ao-daikanyama.com>



Beautiful rice serving spoon

“UTAGE”

From our Japanese factory to our skilled Japanese craftspeople, Prince Kogyo is proud to be a manufacturer of 100% “Made in Japan” products and has remained so since its establishment. On this occasion we introduce products that are symbolic of Japanese culture to the rest of the world. As Japanese and other rice based cuisines gain international popularity we present our “UTAGE” rice serving spoon. Using non-stick, durable precious woods the spoon is both easy to use and aesthetically beautiful.

Item no: TNL2-09-01

Product name: “UTAGE”

General category: Rice serving spoon

Variations: White/ebony, black/rosewood

Size: W70×H200×D17mm

Materials: Resin part – Fluorine resin,

Materials: Main body – Ebony, rosewood

Finish: Resin part – Moulded,

Finish: Main body - Polished

Weight: 70g

Designer: Mitsunobu Hagino

People engaged in production:

Mitsunobu Hagino, Nobuo Takano,

Misako Kagoshima



Usage precautions:
Please wash after use and store in a moderately dry place.



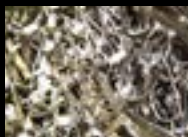
PRINCE KOGYO CO.,LTD.

Address: 313-1, Kanekoshinden, Sanjo-city, Niigata 955-0814 JAPAN

Phone: +81 (0)256-33-0384 Fax: +81 (0)256-35-2826 E-mail: info@prince-kk.jp URL: <http://www.prince-kk.jp>

Non-stick cookware that is advanced from both hygiene and ecological standpoints.

Established in 1964 under the concept of “opening”, Prince Kogyo has been manufacturing can openers, bottle openers, corkscrews and so on, working hard to meet the needs of the dining and cooking sectors. Disillusioned with the assumption that you can put your heart and soul into cooking with inferior tools, or work effectively in a place out of sight, we work hard to make products enhanced with a little extra thoughtfulness. Thanks to our original press finishing we also enjoy a good reputation for our technical expertise.





Evolve by
Technique

Underpinned by safety and precision,
our fine wooden tools are being
redefined as “dressed-up technology”.

An innovative wood works that draws on
traditional Japanese woodworking and engraving
techniques that have been passed down through
the ages we aim to share finely handcrafted wood
products with the rest of the world. Following the
path trodden by our forefathers we challenge
ourselves to seek out still new possibilities of
working with wood. We have long specialized the
scarcely available ebony, renowned for being
taxing to work.



Gems combining tradition and innovation

Ebony attired

Marunao started life as manufacturer of accessories for carpenter's ink pots. The animals engraved on these parts were considered lucky omens in Japan and include the dragon, the turtle and the crane. We have set ourselves the challenge of bringing these animals of old to a modern audience.



Designer: Takahiro Fukuda, Asami Maruta
People engaged in production: Takahiro Fukuda, Asami Maruta, Masato Maruyama

Usage precautions:
Misshaping can result from prolonged submersion in water and/or excessively forceful impact.



MARUNAO CO.,LTD.

Address: 1662-1 Yada, Sanjo-city, Niigata 959-1107 JAPAN
Phone: +81 (0)256-45-7001 Fax: +81 (0)256-45-7003
E-mail: fukuda@marunao.com URL: <http://www.marunao.com>

- (A)
Item no: TNL2-11-01
Product name: Dragon and Crescent moon
General category: Ring
Size: W24.6×H25×D20.8mm
Materials: Ebony, silver dust, silver 950,
natural urushi lacquer
Finish: Urethane paint
Weight: 3g
- (B)
Item no: TNL2-11-02
Product name: Dragon's gem
General category: Ring
Size: W24.6×H25×D20.8mm
Materials: Bocote, silver 950
Finish: Polished
Weight: 3g
- (C)
Item no: TNL2-11-03
Product name: Turtle Shell
General category: Ring
Size: W24.6×H25×D20.8mm
Materials: Ebony, gold dust, natural urushi
lacquer
Finish: Urethane paint
Weight: 3g
- (D)
Item no: TNL2-11-04
Product name: Octagonal Turtle
General category: Ring
Size: W24.6×H25×D20.8mm
Materials: Ebony, 18-karat gold
Finish: Polished
Weight: 3g
- (E)
Item no: TNL2-11-05
Product name: Crane Bracelet
General category: Bracelet
Size: W70×H14×D60mm
Materials: Ebony, red coral, silver 950
Finish: Polished
Weight: 13g
- (F)
Item no: TNL2-11-06
Product name: Turtle Brooch
General category: Brooch
Size: W103×H6.5×D48mm
Materials: Ebony, gold dust, natural urushi
lacquer
Finish: Urethane paint
Weight: 17g
- (G)
Item no: TNL2-11-07
Product name:
Dragon's claw pierced earring
General category: Earrings
Size: W12×H18×D12mm
Materials: Ebony, silver 950
Finish: Polished
Weight: 2g



High performance tableware inspired by professional tools

Table tools

Since its establishment in 1924 for over 90 years Maruto Hasegawa Kosakujo has been using high performance innovative machinery to create its range of professional tools designed for use by experts in their field. Bringing this expertise to the dinner table we have developed a range of high performance tableware to enhance your daily dining experience. Suitable for opening bottles of beer, Japanese sake and so on.

Born from the know-how of producing pliers, a new type of bottle-opener.

With its foundations in manufacturing a diverse range of multi-functional pliers, Maruto is known for developing nail care instruments designed for comfort and ease of use for ladies as well as grooming tools for gentlemen. Combining the use of machinery to attain levels of fine precision with the handcrafted elements by our master artisan we produce exquisite products for export around the world.



(A)

Item no: TNL2-10-01

Product name: Bottle open plier
(for beer bottles)
General category: Beer bottle opener
Variations: Colour: Silver
Size: W125×H32×D10mm
Materials: Stainless steel
Finish: Hairline finish
Weight: 200g

(B)

Item no: TNL2-10-02

Product name: Bottle open plier
(for Japanese sake bottles)
General category:
Japanese sake bottle opener
Variations: Colour: Silver
Size: W130×H45×D10mm
Materials: Stainless steel
Finish: Hairline finish
Weight: 150g

Designer:
Tomoyuki Nakada,
Yosuke Ogawa,
Shunsuke Nakamura
People engaged in production:
Shunsuke Nakamura,
Tomoyuki Nakada,
Yosuke Ogawa,
Yasuo Sato

Usage precautions:

Use with caution, take particular care not to pinch fingers. Please dry with a cloth if product gets wet. Please oil the moving parts on a regular basis.



MARUTO HASEGAWA KOSAKUJO INC.

Address: 16-1 Doba, Sanjo-city, Niigata 955-0831 JAPAN Phone: +81 (0)256-33-3010 Fax: +81 (0)256-34-7720
E-mail: keiba@keiba-tool.com URL: <http://www.keiba-tool.com>





From “tools to grate ingredients” to “tools to enhance the enjoyment of eating”.

Based in Sanjo, the home of bladed tools, Yamatani Works manufactures carpentry tools, with a particular focus on planes. We are unswerving in our aim of creating tools that are “faster, safer and more accurate”. Using the skills and experience we have accumulated over years of making carpentry tools we are pleased to introduce our range of dining tools produced to similar exacting standards.



Enjoy freshly shaved bonito flakes as you eat your meal

Dried bonito shaver, “Akakou”

“We want to enjoy the taste of freshly shaved bonito flakes at the table as we eat our meals.” To meet the demands of such a pleasurable lifestyle we introduce our dried bonito shaver. We have named the shaver “Akakou” to reflect the beautiful pinkish colour of freshly shaved bonito. Of appropriate size and minimalist design the shaver is not out of place on the table itself.



(A)

Item no: TNL2-12-01

Product name:

“Akakou” - Aogami steel × walnut

General category: Dried bonito shaver

Variations: Aogami steel × walnut

Size: W65×H58×D205mm

Materials: Box – Walnut,

Materials: Plane – Oak, aogami steel

Finish: Oiled

Weight: 490g

(B)

Item no: TNL2-12-02

Product name:

“Akakou” - Aogami steel × beech

General category: Dried bonito shaver

Variations: Aogami steel × beech

Size: W65×H58×D205mm

Materials: Box – Beech,

Materials: Plane – Oak, aogami steel

Finish: Oiled

Weight: 490g

Designer: Shunsuke Yamatani

People engaged in production:

Shunsuke Yamatani and others

Usage precautions:

We recommend the shaver be used with gloves as the plane blade is extremely sharp. Children should only use under adult supervision in order to prevent injury. Please do not wash with water. If water does get into the unit please dry immediately. In order to deter insects etc please clean thoroughly with a brush after use.



Easy detection pet address

Encapsulated silicone IC Tag

An accessory to be attached to your pet's collar containing contact information to be used in the case of the pet becoming lost. Using our expertise in silicone, the accessory has been designed with the comfort of the pet in mind and is extremely soft. Its design is also outstanding so it looks great too (The system is unfinished).

Item no: TNL2-04-01

Product name: Family ties

General category: Encapsulated IC tag

Variations: Colour -

Mint, pink, bordeaux, brown

Size: W64×H24×D5mm

Materials: Silicone rubber, IC tag

Weight: 4g

Designer:

Tag design: COBO DESIGN CO.,LTD.

Logo design: Moeko Takano

People engaged in production:

Atsushi Suetake, Moeko Takano,

Shota Nakagawa, Taku Ishii,

Masato Endo, Shigenori Nakagawa,

Tsutomu Inomata



Usage precautions:

Please exercise caution when entering personal details into the IC tag. If bent excessively the antenna of the encapsulated IC tag can become disconnected. Please keep out of the reach of children.



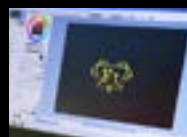
SUNARROW KASEI CO.,LTD.

Address: 837-1 Miyakawa, Sado-city, Niigata 952-0212 JAPAN Phone: +81 (0)259-66-2462 Fax: +81 (0)259-81-1005

E-mail: info@sunarrow-kasei.co.jp URL: <http://www.sunarrow-kasei.co.jp>

Using NFC (near field communications) to help find lost pets.

Sunarrow is a chemicals company that specializes in the silicone resin coating of digital equipment. Having started business as a waterproof coating specialist for wristwatches, Sunarrow has many years of experience in accumulating skills and technologies in precision molding in rubber and silicone. Resin molding for small objects that require fine precision work is a particular specialism.





Breathing new life and assigning a new mission to waste,
discarded material

Accessories from waste

Repurposing the brass wire used when cutting steel. Discarded waste material that would otherwise end up as scrap is transformed into a lustrous gold bracelet. One of the characteristics of the bracelets is their pliability, made possible by the delicate hand-weaving process.

Item no: TNL2-05-01

Product name: Bracelet

General category: Bracelet

Variations: Colour - Yellow gold

Size: W100mm

Materials: Brass, silver

Weight: 20g

Designer: Tomoyuki Kobayashi

People engaged in production:

Tomoyuki Kobayashi



Usage precautions:
Please note that oxidization can lead to changes in colour.
The bracelets are not suitable for wear by those with metal allergies.



Factory waste is transformed into something new.

Suwada Blacksmith Works utilizes modern high performance processing machinery whilst at the same time capturing the very essence of the artisan whose handicraft is at the heart and soul of each stage of production. As a company that creates precision pieces of great beauty we have challenged ourselves to pursue an ecologically conscious path that seeks to "reclaim and transform waste material".



Our factories are here for you

The Niigata manufacturers of
Hyakunen-monogatari products,
possess excellent skills and intuition which
can be seen in this group of products.
They want to use these abilities to be
beneficial worldwide.

How about creating the next generation of
superior tools by combining your life experience
with the Niigata manufacturer's ability?

Our factories are here for you.



ISHIYAMA MOKKOUSHO, INC.

Address: 5-26 Shineicho, Kamo-city, Niigata 959-1381 JAPAN Phone: +81 (0)256-52-0300 Fax: +81 (0)256-53-2379
E-mail: info@ishiyama-mokkousho.co.jp URL: http://ishiyama-mokkousho.co.jp



Niigata Japanese ware Co., Ltd.

Address: 1-329 Eishodori, Chuo-ku, Niigata-city, Niigata 951-8114 JAPAN Phone: +81 (0)25-265-2968 Fax: +81 (0)25-265-3144
E-mail: nuridon311@ma.tlp.ne.jp URL: http://www.nuridon.com



NIIGATA INVESTMENT CASTING CO., LTD.

Address: 726-3 Sunakotsuka, Tsubame-city, Niigata 959-0103 JAPAN Phone: +81 (0)256-98-5121 Fax: +81 (0)256-98-5648
E-mail: info@niigata-cast.co.jp URL: http://niigata-cast.co.jp



NOMURA MOKKOU CO., LTD.

Address: 1-7-16 Nissekicho, Nagaoka-city, Niigata 940-0095 JAPAN Phone: +81 (0)258-33-2014 Fax: +81 (0)258-34-3712
E-mail: n.tategu@sage.ocn.ne.jp URL: http://nomu.s1.bindsite.jp



GYOKUSENDO

Address: 2-2-21 Chuo-dori, Tsubame-city, Niigata 959-1244 JAPAN Phone: +81 (0)256-62-2015 Fax: +81 (0)256-64-5945
E-mail: info@gyokusendo.com URL: http://www.gyokusendo.com



ao, inc.

Address: 942 Nakashuku, Itoigawa-city, Niigata 941-0003 JAPAN Phone: +81 (0)25-555-2300 Fax: +81 (0)25-555-4278
E-mail: bisou@po5.nsk.ne.jp URL: http://www.ao-daikanyama.com



PRINCE KOGYO CO., LTD.

Address: 313-1, Kanekoshinden, Sanjo-city, Niigata 955-0814 JAPAN Phone: +81 (0)256-33-0384 Fax: +81 (0)256-35-2826
E-mail: info@prince-kk.jp URL: http://www.prince-kk.jp



MARUNAO CO., LTD.

Address: 1662-1 Yada, Sanjo-city, Niigata 959-1107 JAPAN Phone: +81 (0)256-45-7001 Fax: +81 (0)256-45-7003
E-mail: fukuda@marunao.com URL: http://www.marunao.com



MARUTO HASEGAWA KOSAKUJO INC.

Address: 16-1 Doba, Sanjo-city, Niigata 955-0831 JAPAN Phone: +81 (0)256-33-3010 Fax: +81 (0)256-34-7720
E-mail: keiba@keiba-tool.com URL: http://www.keiba-tool.com



Yamatani Works, Ltd

Address: 12-19 Higashishinbo, Sanjo-city, Niigata 955-0863 JAPAN Phone: +81 (0)256-34-5989 Fax: +81 (0)256-34-5989
E-mail: info@dai-ya.com URL: http://www.dai-ya.com



SUNARROW KASEI CO., LTD.

Address: 837-1 Miyakawa, Sado-city, Niigata 952-0212 JAPAN Phone: +81 (0)259-66-2462 Fax: +81 (0)259-81-1005
E-mail: info@sunarrow-kasei.co.jp URL: http://www.sunarrow-kasei.co.jp



SUWADA Blacksmith Works, Inc.

Address: 1332 Koanji, Sanjo-city, Niigata 959-1114 JAPAN Phone: +81 (0)256-45-6111 Fax: +81 (0)256-45-4528
E-mail: suwada@suwada.co.jp URL: http://www.suwada.co.jp

Tools for the Next Way of Life

Evolution



General Manager Masaki Nakamura
Design Manager Shinichi Yamamura

Project Team (NICO)

Supervisor Rei Kurokawa
Minoru Hosogai
Satoshi Suzuki
Tamotsu Sasaki
Mizuki Higuma
Akiko Kawashima

Niigata Industrial Creation Organization
(NICO)

5-1 Bandaijima, Chuo-ku, Niigata-city, Niigata 950-0078 JAPAN

Phone: +81(0)25-246-0044 Fax: +81(0)25-246-0030

E-mail: hyaku@nico.or.jp

URL: www.nico.or.jp/hyaku/english

www.facebook.com/hyakunenmonogatari